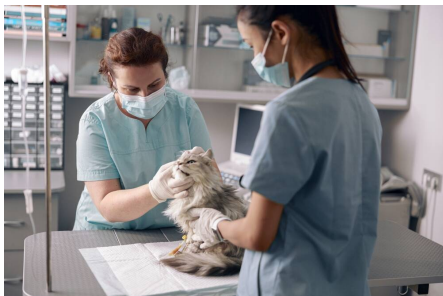


## Veterinary Surgeons' Board of WA

**From:** Veterinary Surgeons' Board <admin@vsbwa.org.au>  
**Sent:** Wednesday, 23 February 2022 3:31 PM  
**To:** Veterinary Surgeons' Board of WA  
**Subject:** Critical Workers



**Veterinary Surgeons' Board**



### CRITICAL WORKERS AND ISOLATION

The Board has become aware that there is some confusion as to the current and future protocols for close contacts working in veterinary clinics and hospitals

Currently [high caseload COVID-19 protocols](#) are in effect state-wide, which include new close contact definitions, testing and isolation protocols and the use and registration of RATs. Close contacts must isolate for at

least 7 days.

When [very high caseload COVID-19 protocols](#) come into effect, critical workers who are close contacts, but are asymptomatic, will be able to temporarily attend work during their isolation period to alleviate workforce shortages, maintain critical services and avoid catastrophic losses such as loss of life, ongoing access to care and goods, and workplace safety.

A person who works at a veterinary clinic or veterinary hospital is classed as a [critical worker](#).

Employers need to register for [critical worker furloughing settings](#) in advance of a very high COVID-19 caseload being declared.

For further information visit the [Critical Worker Frequently Asked Questions](#).

**Postal Address:** PO Box 1721 Melville South WA 6156

**Office:** Suite 1, First Floor, Melville Professional Centre, 275 Marmion Street, Melville WA 6156

**Telephone:** (08) 9317 2353 **Facsimile:** (08) 9317 2356 **Email:** admin@vsbwa.org.au

[www.vsbwa.org.au](http://www.vsbwa.org.au)

[Unsubscribe](#)

